

Travel information & local organization for the

COST Action MINING the EUROPEAN ANTHROPOSPHERE (MINEA)

2nd Management Committee Meeting & Working Group Meetings

Ljubljana, Slovenia
February, 23 - 24, 2017

CONFERENCE VENUE

The event will be hosted by the [Geological Survey of Slovenia](#) (GeoZS). The event will be held in the premises of GeoZS in Ljubljana, Dimičeva ulica 14; SI - 1000 Ljubljana, Slovenia, 6th floor.



Ljubljana is the capital of a state, but it is small and pretty and easy to get around. It is the Green capital of Europe of 2016.



TRAVEL INFORMATION

Traveling by PLANE:

[Ljubljana "Jože Pučnik" Airport](#) is having regular flights from major European airports (London, Frankfurt, Paris, Zürich, Vienna, Brussels etc.), as with some other airports (Istanbul, Moscow). [Venice International Airport](#) has good connections with the South-East Asia and the United states. [Venice-Treviso](#) hosts low-budget flights.



Airport Transfer: There are a couple of ways of transportation from the Ljubljana Airport to the city centre: [bus](#), [Markun shuttle](#) (recommended, 9€ per ride, - booking needed via their web page), [Shuttle Ljubljana](#) or [ZUP shuttle](#). Each participant books its own shuttle via service provider's web-site or can book airport transfer also at their hotel. You can use the [GoOpti shuttle transfer](#) from other nearby airports, especially from Venice and Venice-Treviso Airports.

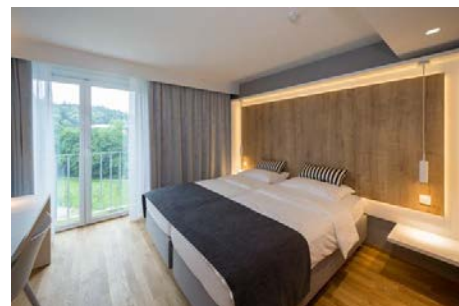
Travelling by train: You can book your tickets to [The Ljubljana Railway Station](#) which is Slovenia's main railway station. It connects Ljubljana to Trieste, Frankfurt, Munich, Zurich, Prague, Vienna, Graz, Budapest, Zagreb, and Belgrade. International train tickets to Ljubljana can be purchased via [Deutsche Bahn](#) web page.

Travelling by car: We drive on right side. **Vignette (sticker) is required to use highways.** It can be bought at the point of entry to Slovenia, and at every gas station. Weekly vignette costs 15€. Frequent vignette controls takes place. However, no vignette is required if you are not going to drive on highways. Road assistance number is 1987.

ACCOMMODATION

Special price for the participants is available at the [M-hotel](#) (single 56 EUR/night, double 70 EUR/night, breakfast included + 1.27 € city tax). Booking **should be made individually via special registration form provided** (at the COST Action website: <http://www.minea-network.eu/events.php>), and sent to the following e-mail address: anja.novak@m-hotel.si.

To assure accommodation at a special price, participants should **send the fulfilled registration form by 22nd January 2017**.



HOW TO COME FROM THE HOTEL TO THE VENUE

Direct bus line connects M-hotel and GeoZS (venue). The bus station is right behind the hotel ("Kino Siska"). Bus No. 8 takes you to the venue ("Stadion"), and [rides approx. every 20 minutes](#). Map of bus lines can be found following this [link](#). **To use Ljubljana public transport you will need to purchase Urbana card at every kiosk** or at the hotel reception. Yellow Urbana card is recommended, and you can purchase as many credits as you want. 1 bus ride costs 1.20 €, and you can use public transport 90 minutes after you check in with card (on the bus at the driver).



Since Ljubljana is bike-friendly town ([Ljubljana is 13th most bike-friendly city on the planet](#), and it is [fourth among EU capitals counting the city share of transportation by bicycle](#)) alternative mean of moving from the hotel to the venue is by using public bike rentals [BicikeLJ](#) (its (almost) free - it costs you 1 € per week). As you will see, many people commute by bicycles. You can also go by foot - for 2.3 km route you would need a little less than 30 minutes.

MISCELLANEOUS INFORMATION

The Currency in Slovenia is euro (€). All commonly used credit cards are usually accepted, including MasterCard, Visa, American Express and others. There are plenty of ATM's available. Slovenia is a part of the Schengen area and a member of the European Union. Time zone is GMT+1 (CET). Country phone code is +386. Voltage used is +230V, 2-pin round plugs are used. Slovenia is well covered by GSM signal, and network operates on 900 and 1800 MHz bands. Emergency service dial number is 112 and 113 for police. Smoking is forbidden in all public areas, including restaurants, hotels and airports. English and German are most commonly used foreign languages. Slovenia is very safe to travel, even if you walk at night. Beside usual travelling precautions there are no other special health & safety concerns. Tap water is safe to drink.

For more information about Ljubljana, visit www.visitljubljana.com. More information about Slovenia could be found at www.slovenia.info.

CONTACT DETAILS

Local Organizer: General travel information & local organisation:

Gorazd ŽIBRET, Geological Survey of Slovenia, gorazd.zibret@geo-zs.si; +386-41-370-740

MINEA Chair:

Ulrich KRAL, Technische Universität Wien, ulrich.kral@tuwien.ac.at; +43-1-58-801-226-55