



October 2018

Subject: Travel information for COST Action CA15115 4th Management Committee (MC) Meeting and Working Group (WG) Meetings, 26-27. November 2018, Budapest.

Content

TOP 1)	Venue	1
TOP 2)	City map with venue and accommodations	2
TOP 3)	Building map	3
TOP 4)	Travel information	4
TOP 5)	Accommodations (some selected ones)	7
TOP 6)	Contact details for Local Organizer	8

TOP 1) Venue

**Mining and Geological Survey of Hungary
(MBFSZ)**

**14 Stefania ut
1143 Budapest
HUNGARY**



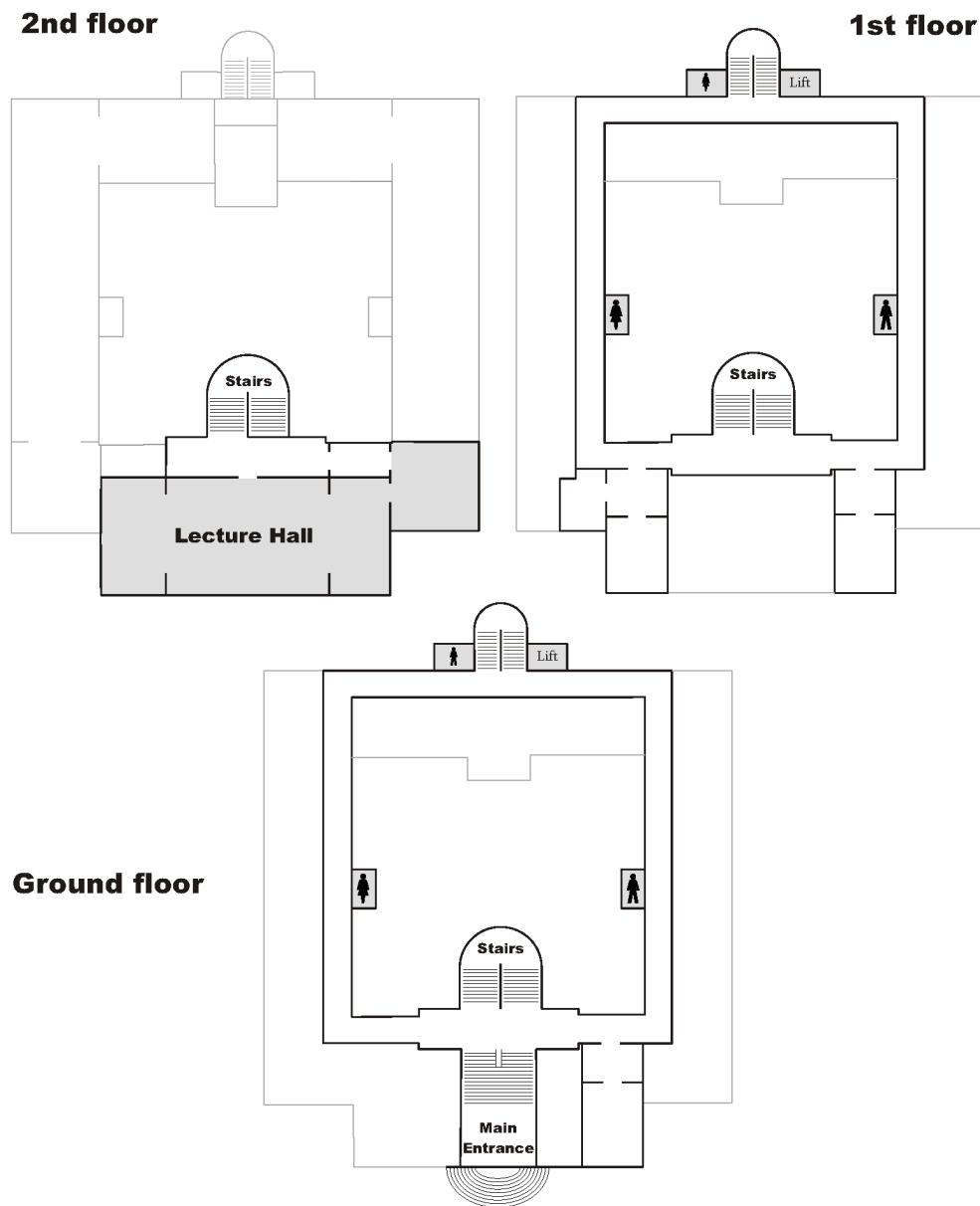
TOP 2) City map with venue and accommodations



Map of the locality of the MBFSZ with hotels in 5-10 minutes by walk.

TOP 3) Building map

MINING AND GEOLOGICAL SURVEY OF HUNGARY





TOP 4) Travel information

BY PLANE

Budapest Franz Liszt International Airport : BUD located about 16 km (10 miles) southeast of the city center. The airport's central telephone number for information is: +36-1 296-9696 or on +36-1 296-7000. Web: www.bud.hu

AIRPORT TERMINALS

The airport has two terminals. **Terminal 1** closed recently., **Terminal 2** is divided into **Terminal 2A** (gates 20-30), serving Schengen Area destinations, and **Terminal 2B** (gates 11-19) serving non-Schengen Area destinations. 2A and 2B, being within a short walking distance from each other.

CONNECTIONS

Hungarian low cost airline Wizz Air operates flights between Budapest and more than twenty European cities. American Airlines and the lead European airlines operate direct flights between Budapest and their home cities. Many low cost airlines also operate service to/from Budapest.

AIRPORT TRANSFER

- **Public transport.**

There is a train station called Ferihegy next to former Terminal 1, from where suburban trains (called 'személy') run twice an hour to Budapest-Nyugati station in the city center, taking 25 minutes. Dedicated train tickets can be purchased from cashiers or vending machines next to the cashiers in the pedestrian underpass in Nyugati - press the button 'Ferihegy'; normally the machine can give change. At Ferihegy station there is a modern ticket vending machine at the platform towards Budapest. A single full-fare train ticket costs 520 HUF for this travel, but local public transport travelcards are also valid

(http://www.budapest.com/travel/getting_around/public_transport.en.html).

Public transport between Ferihegy train station and Terminals 2A/2B is provided by the local bus 200E, running every 8-15 minutes, and travel time approx. 10 min, The bus stop towards the Airport is situated directly next to the train station, but you have to pass a pedestrian bridge with elevators not always working. (Within the bus, this stop is called "Ferihegy vasútállomás" - i.e. train station - in case you want to get off there.) Alternatively you can pre-order a taxi by phone to wait in the bus-stop, to get to the Airport faster or at night. Single bus tickets are available in airport terminals for HUF 350 at the newspaper vendors, or can be purchased from the driver for HUF 450.

The same bus line 200E runs somewhat further into the city, ending at the end station of metro M3 'Kőbánya-Kispest', a small local transport hub. Note that for transferring there to the metro, another 350 HUF-ticket is required. The trip from the airport to Deák Ferenc tér metro station takes about 45 to 60 minutes.

Bus line 100E runs every 30 minutes from the airport to Deák Ferenc tér metro station, the trip takes 35 minutes. Single bus tickets are available in airport terminals for HUF 350 at the newspaper vendors, or can be purchased from the driver for HUF 450.

- **Minibus service.** If you travel alone, consider the Airport Minibus service a shared taxi operation that collects passengers going in the same direction and will take you to or from anywhere in



Budapest for HUF 4.400 per person. Join the queue at the airport and you will be on your way in 15 minutes. For the trip back, call the centre at +36-1 296-8555 at least 24 hours beforehand and Airport Minibus will pick you up.

- **Taxi.** Ferihegy transzfer HUF 4.900 (15.65 €) The only contracted taxi operator from Liszt Ferenc airport is **Főtaxi**. Depending on your destination, a trip to Budapest will cost between HUF 7.000-9.000 (25-30 €). Queue at the taxi stand first to receive a written quote for your fare, then pay it when you arrive at your destination. This system is designed to eliminate unjustified price hikes.

WARNING: unless you have pre-ordered a taxi from a different company, do not accept offers from taxi drivers waiting (illegally) inside the terminal or near the exit.

BY TRAIN

Trains connect Budapest with almost all countries in central and eastern Europe. All trains arrive at *Budapest Keleti* station, unless stated otherwise.

- Vienna 2½h, every two hours, departing from *Wien-Meidling* station. For tickets from Vienna, as well as from other cities in Austria, note: the earlier you book them, the cheaper they are. One-way ticket price from Vienna begins at €19.
- Bratislava: 2½h, six EC trains a day. One-way ticket price from Bratislava begins at €9.
- Bucharest: 16h, two night trains *Dacia* and *Ister* and one daytime connection with change at Timisoara. For *Ister* train you can buy a discounted *Fortuna* ticket for €29 for seat or €39 for couchette, but you should do it at least 7 days in advance. It can be booked online here <http://elvira.mav-start.hu/elvira.dll>.
- Ljubljana: 9h, a daytime IC *Citadella*, arriving at *Déli* station. There are discounted *Budapest-Special* ticket for €29 one-way and €49 return. Apart from this there is a nighttime train from Venice through Croatia.
- Zagreb: 6-7h, two daytime trains a day. The train *Afram*, arriving at 16:40, ends up at *Déli* station. Return ticket valid 1 month costs about €35.
- Belgrade: 8h, two daytime trains *Avala* and *Ivo Andric* and one night train *Beograd*. There is a special offer *Budapest Special/Beograd Special*, €15 for one-way and €26 for return ticket. Couchette reservation is €8 for 6-berth couchette, but there are reservation-free seats even on the night train. Notice that the night train, arrives in Budapest very early at 5:50 AM, and border crossing is around 2:30 AM.
- Sarajevo: 11h, IC *Drava* over Croatia. One-way ticket costs about €54 and return ticket valid 1 month costs only €2 more.
- Sofia: 18½h, *Balkan Express* with a through couchette car via Belgrade. Direct ticket is expensive, the better solution is to buy a ticket Sofia-Belgrade and then Belgrade-Budapest ticket at Belgrade station.



TRAIN STATIONS

The main railway stations (*pályaudvar*) are **Keleti pályaudvar** (Eastern Railway Station), **Déli pályaudvar** (Southern Railway Station) and **Nyugati pályaudvar** (Western Railway Station). The stations are not named for their geographic location in the city.

The stations are well connected to each other and to the rest of the city. Keleti Railway Station is on Metro 2 and 4, Déli Railway Station is located on Metro 2, Nyugati Railway Station is on Metro 3. To get to MBFSZ by public transport get to Keleti by Metro 2 and take bus number 5 or 7 or 173 (bus stop is directly close to the building). Get off at the 3rd bus stop ("Stefania ut") and the institute is in 2 minutes walking distance.

BY BUS

International bus routes are operated by **Eurolines** <http://www.eurolines.com/en/> and **Orangeways** www.orangeways.hu. Most connections run two or three times a week, connections to from Austria and Slovakia run daily.

Népliget Bus station (*Népliget autóbuszállomás, metro 3, Népliget station*). Buses from abroad and most of Western Hungarian destinations arrive and depart here. To get to MBFSZ take the tram line number 1 or 1A and get to the tram station named "*Puskás Ferenc Stadion*". To get to the institute takes around 5 minutes' walk.

BY CAR

Follow the directions of your route planner/GPS. There are plenty of parking places in the vicinity of the venue, parking fee is HUF 265/hour (almost €1/hour) from 08:00 AM to 18:00 PM.

Depending on needs of parking and capacities internal parking with some places in the garden of the MBFSZ may be available.



TOP 5) Accommodations (some selected ones)

CHOICE 1	Danubius Hotel Arena ****
ADDRESS	Ifjúságútja 1-3, 1148 Budapest
WEBSITE	http://www.danubiushotels.com/our_hotels/hungary/budapest/danubius_hotel_arena
DISTANCE FROM MEETING VENUE	250 m
TELEPHONE	+36-1-889-5200
FAX	+36-1-889-5252
MAIL, PRICE	astoria.reservation@danubiushotels.com 58 EURO (Single Room)
CHOICE 2	Hotel Hungaria City Center****
ADDRESS	Kossuth Lajos utca 19-21., 1053 Budapest
WEBSITE	https://www.danubiushotels.com/hu/szallodak-budapest/danubius-hotel-astoria
DISTANCE FROM MEETING VENUE	250 m
TELEPHONE	+36-1-889-6000
MAIL, PRICE	arena.reservation@danubiushotels.com 71 EURO (Single Room)
CHOICE 3	Hotel Veritas ***
ADDRESS	Mogyoródi út 8., 1144 Budapest
WEBSITE	www.hotelveritas.hu
DISTANCE FROM MEETING VENUE	900 m (one bus stop)
TELEPHONE	+36-1-273-2233
FAX	+36-1-222-4792
MAIL, PRICE	hotel@veritas.hu 13.000 HUF, approx. 44 EURO (Single Room)



CHOICE 4	Lions Garden Hotel****
ADDRESS	Cházár András utca 4., 1146 Budapest
WEBSITE	http://www.lions-garden-hotel-budapest.com
DISTANCE FROM MEETING VENUE	500 m
TELEPHONE	+36-1-273-2070
FAX	+36-1-221-4274
MAIL, PRICE	info@lions-garden.com 92 EURO (Single Room)
CHOICE 5	Richter Hotel Panzió
ADDRESS	Thökölyút 111., 1146 Budapest
WEBSITE	http://www.richterhotel.mtt.hu/
DISTANCE FROM MEETING VENUE	1100m (two bus stops)
TELEPHONE	+36-1-363-3956
FAX	+36-1-363-5735
MAIL, PRICE	richterhotel@mail.datanet.hu 14085 HUF (Double Room), approx. 45 EURO

TOP 6) Contact details for Local Organizer

If you have any questions, do not hesitate to contact us:
horvath.zoltan@mbfsz.gov.hu, szabo.katalin@mbfsz.gov.hu