



Bernegger



Wet-Screening plant

On-site CDW and soil treatment

 www.bernegger.at



ein Staatlich ausgezeichnetes
Bergbauunternehmen





Deconstruction and recycling regulations

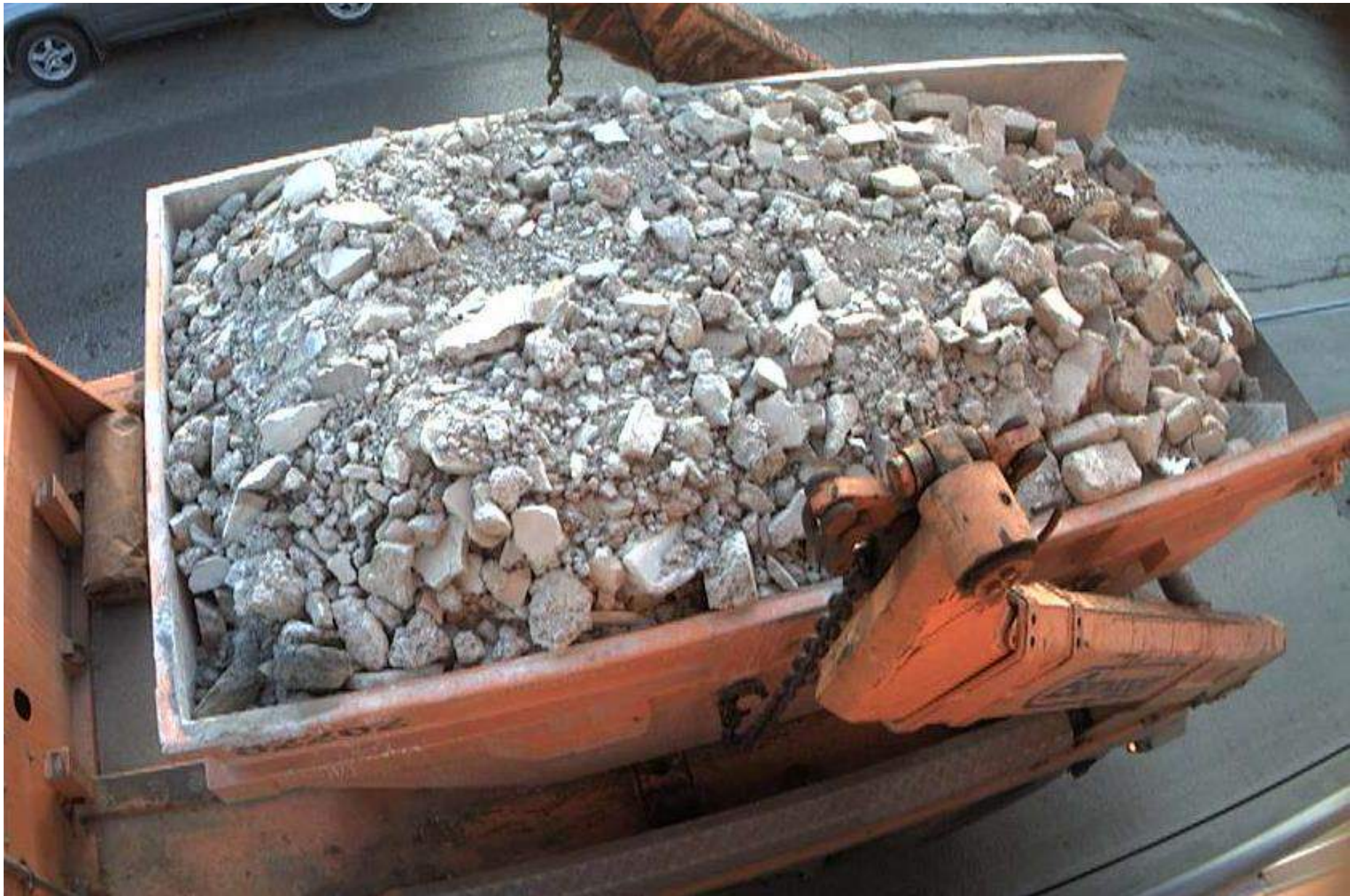
Since 1.1.2016

exploration → deconstruction → documentation → treatment → recycling

> 100 to







Deconstruction and recycling regulations

Since 28.10.2016

exploration → deconstruction → documentation → treatment → recycling

> 750 to

> 100 to









Remediation of contaminated site, Coking facility in Linz



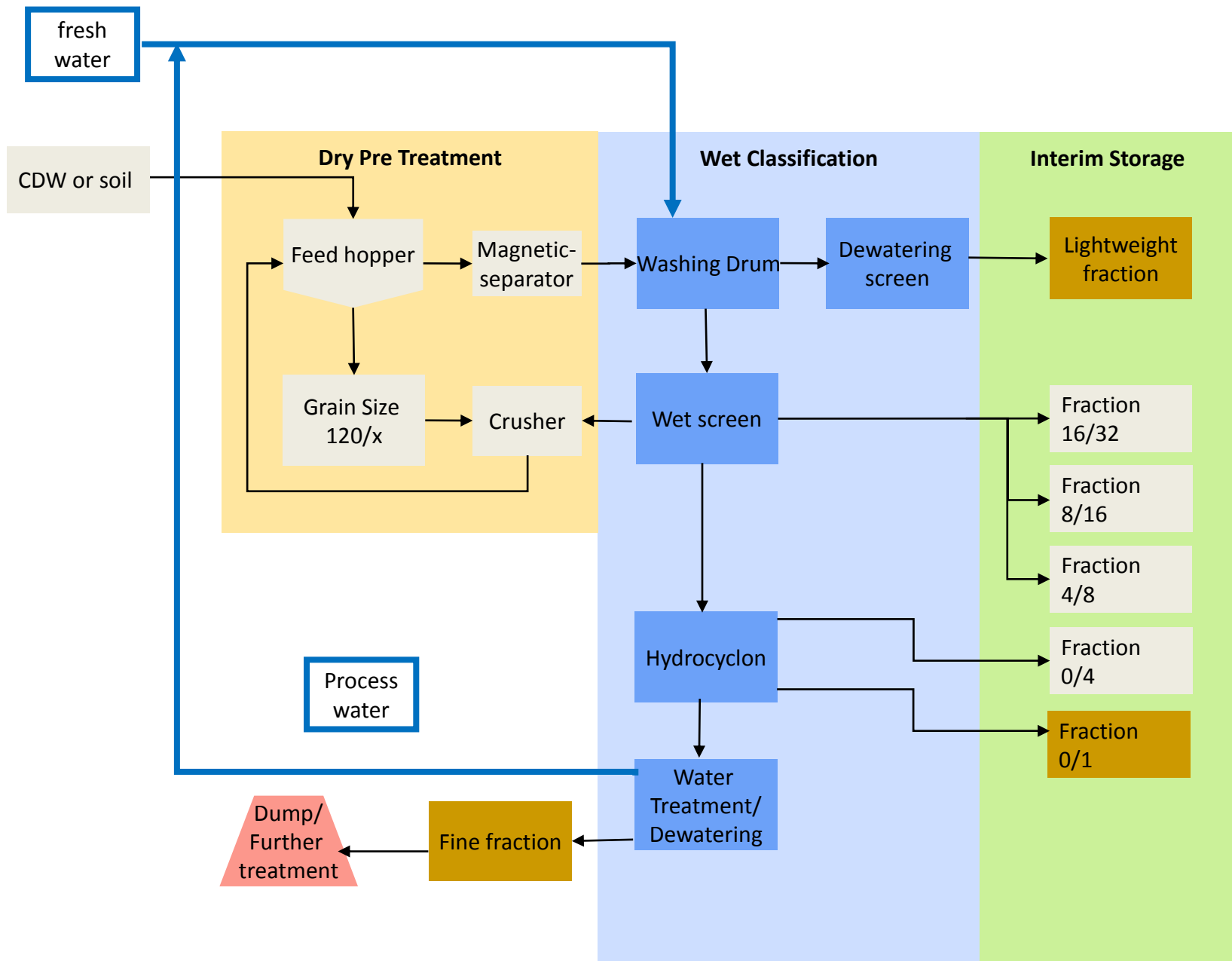
- Complex wet screening process incl. water treatment
- Stationary
- Treated soil since startup 2009: 1.7 mio.t

Stationary plant

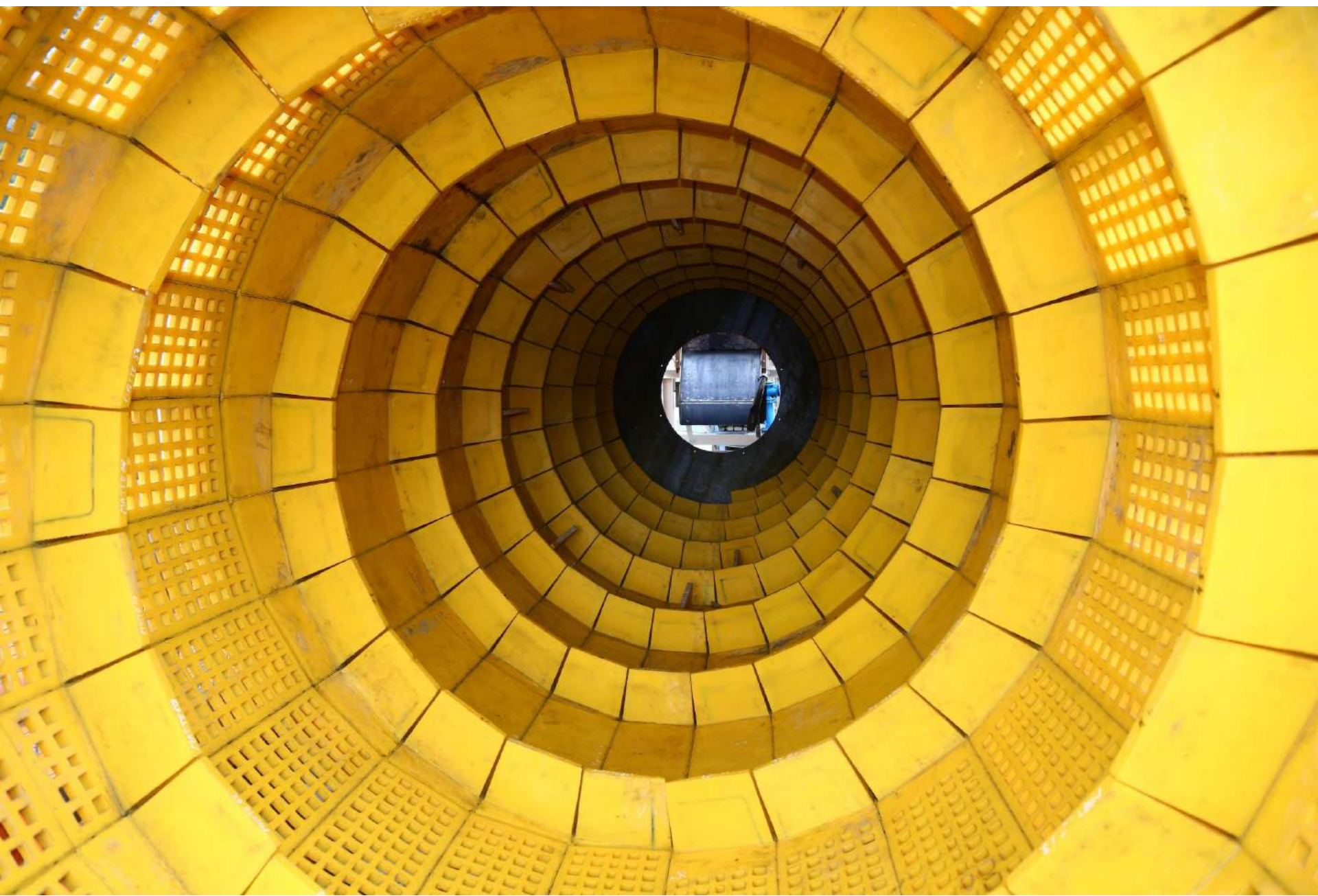
- + High performance
 - + High treatment quality also for high contaminated soil
 - + High recycling rate
 - Transport cost to and from the plant (especially in case of construction projects with a big volume of soil)
 - Environmental pollution caused by transport
 - High investment
- **For construction projects with high quantity of low contaminated CDW and soil >> mobile treatment plant**



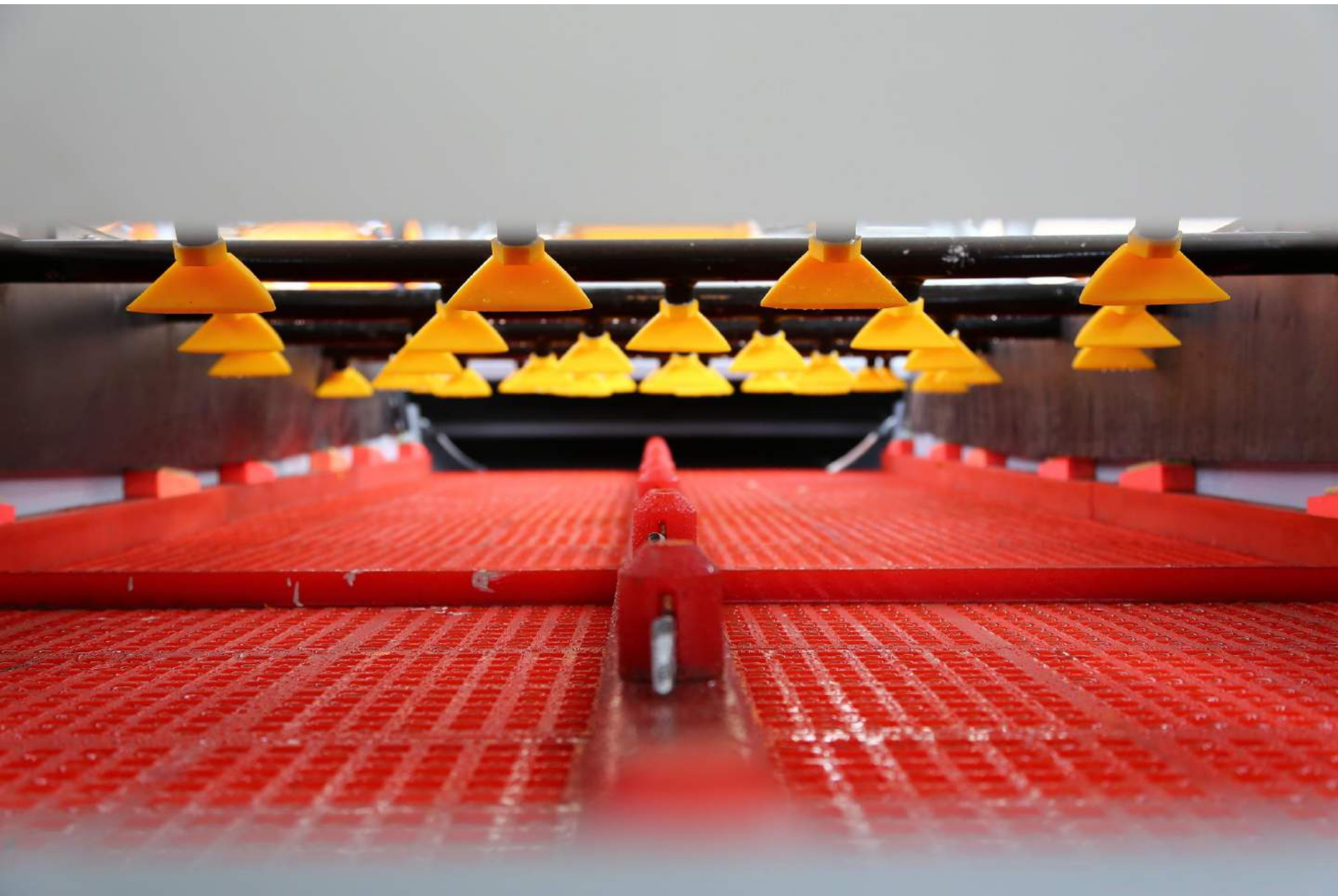




















Treated CDW >> recycling aggregates



Treated CDW >> recycling aggregates



Treated CDW >> filter material to be deposited



Treated CDW [road construction] >> recycling aggregates

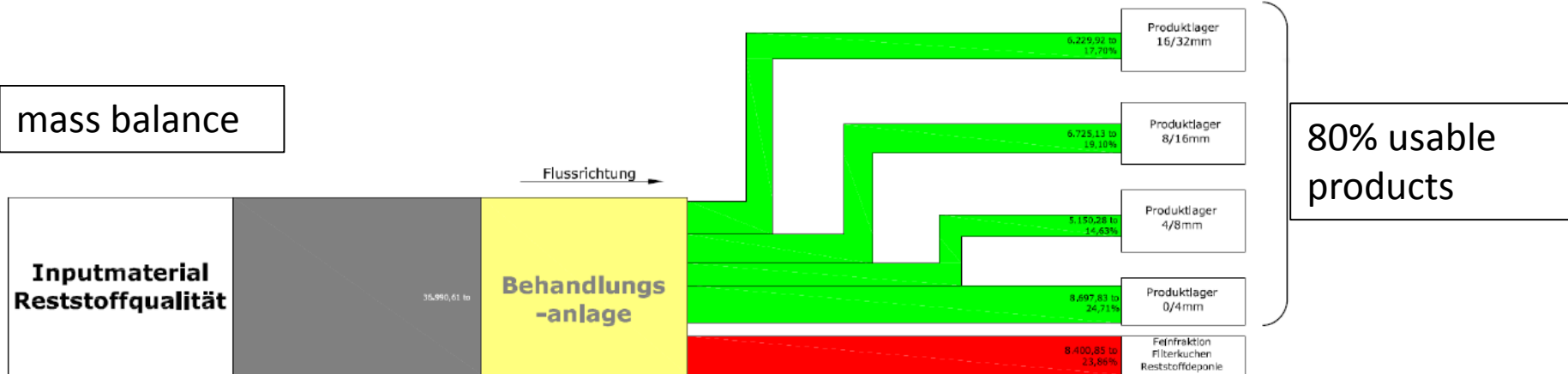


Treated CDW [concrete] >> recycling aggregates

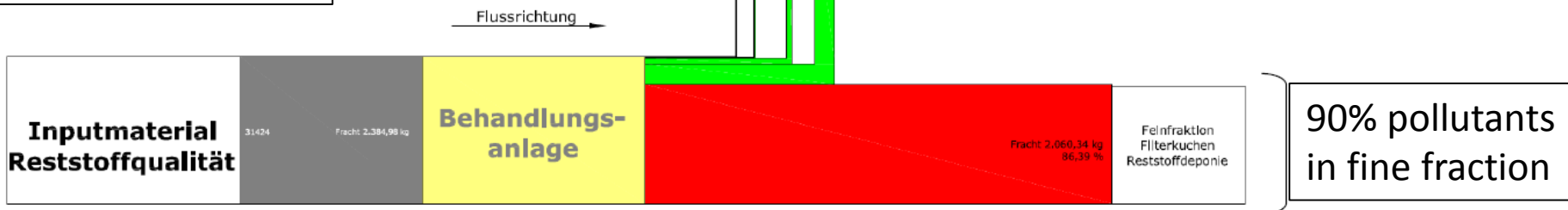


Treated CDW [concrete] >> filter material to be deposited

mass balance



pollutant balance













Summary

- Goal: high recycling rate of CDW and contaminated soil
- Only wet treatment (screening) can ensure high quality and high environmental standards
- On site treatment as cost efficient alternative
 - ✓ Container based > buildup and dismounting in 1 week
 - ✓ Easy to operate (max 2 employees/shift)
 - ✓ High performance in quantity and quality
- State of the art for CDW treatment and remediation projects

DI Christian Mlinar

christian.mlinar@bernegger.at

DI Hubert Rammer

hubert.rammer@bernegger.at

Bernegger GmbH

Gradau 15, A-4591 Molln

