



COST is supported
by the EU Framework
Programme
Horizon 2020

Mining the European Anthroposphere

Insights and Participation Opportunities

COST Action

Ulrich KRAL

Workshop „Recovery technologies from construction and demolition waste“
16. November 2016, Vienna, Austria



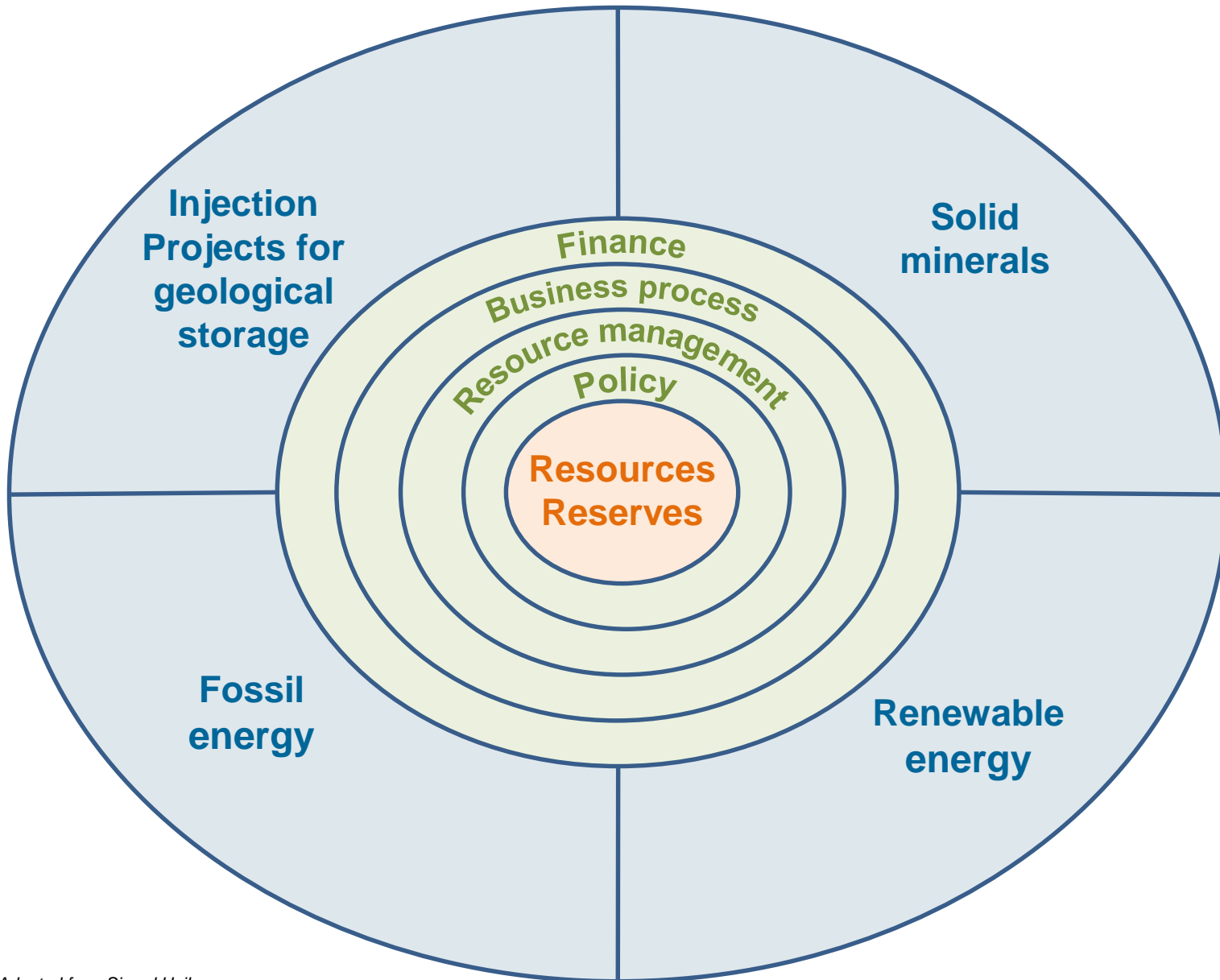
Mining the geosphere

World copper
Resources (identified):
Reserves (2016):

2'100 million tons
720 million tons

US Geological Survey

Domains of application



Mining the anthroposphere

Copper

Resources (identified):

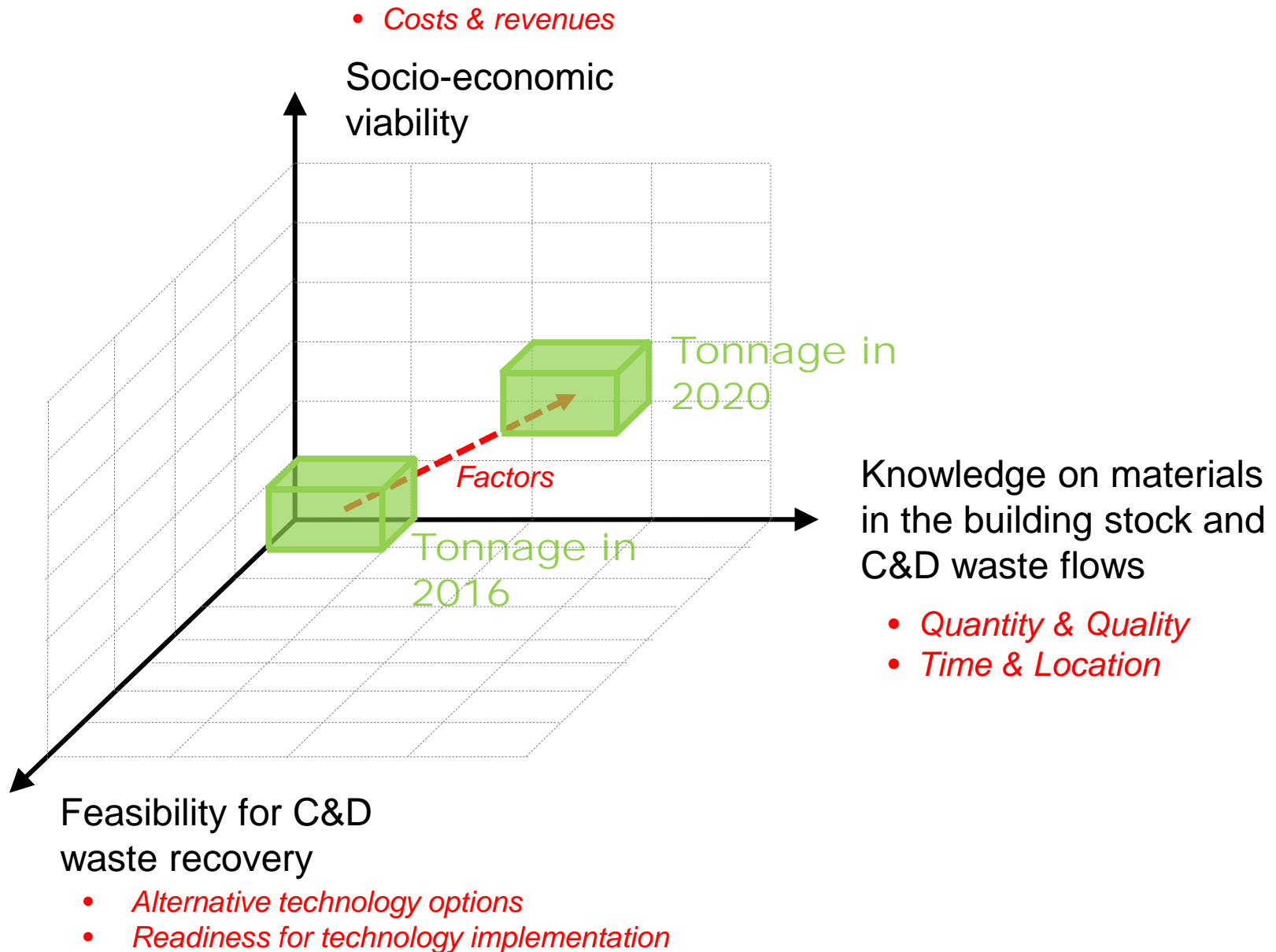
? million tons

Reserves (2016):

? million tons

Aim: Actuate the reporting
of material resources/reserves
in the anthroposphere.

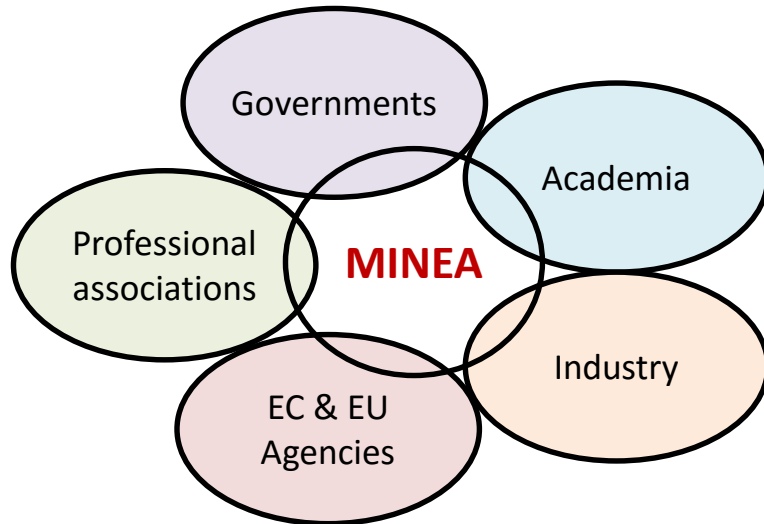
Assessing CDW recovery projects



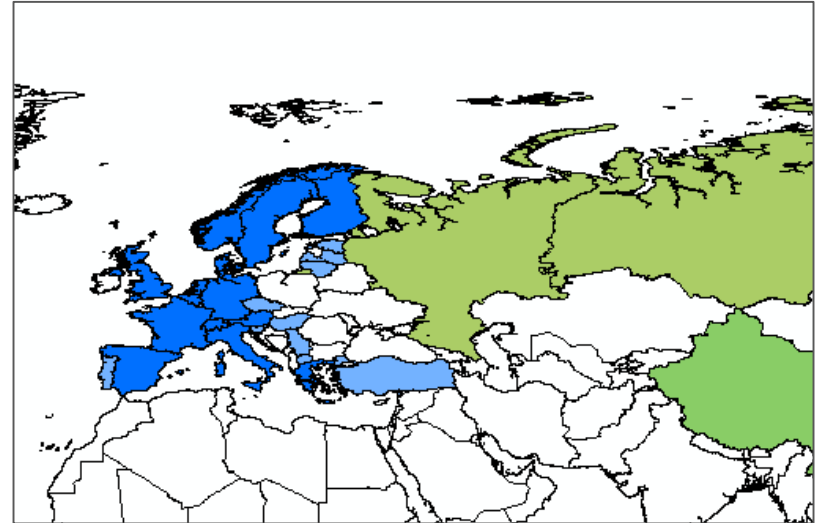


Trans-European Networking

Participants



Geographical coverage



Project duration

May 2016 – April 2020

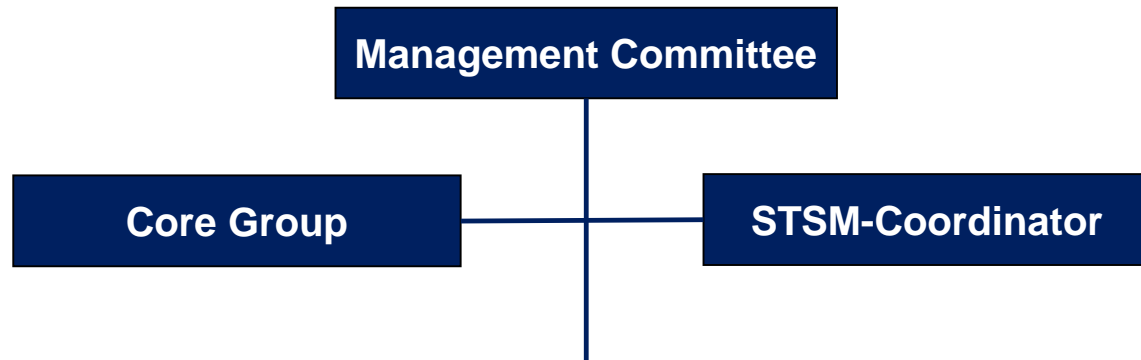
Budget

106'000 Euro for 1st year

(Note: Personal costs are not eligible for reimbursement)



Management structure



Working Groups

WG 4: Integration of WG 1-3 &
Classification and reporting of material resources/reserves

WG 1
Resource potential of
C&D waste

WG 2
Resource potential of
waste in landfills

WG 3
Resource potential of
waste incineration
residues

WG 5
Knowledge
managem.
&
Dissemin.



Expected outputs

a) Deliverables

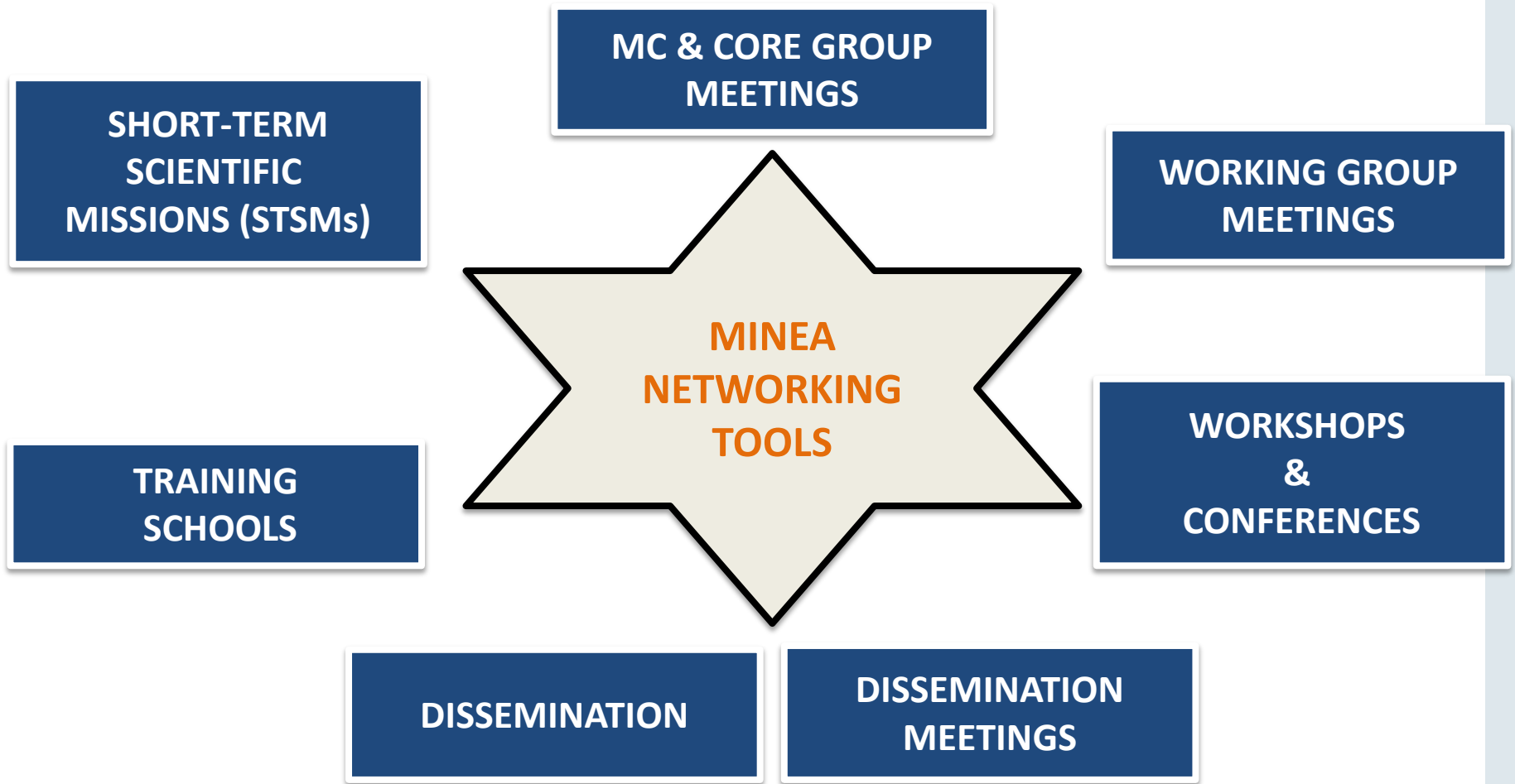
WG N°	Deadline	Deliverable
WG 1	Oct 2017	Recovery technologies for construction and demolition waste. [Report]
	Feb 2019	Knowledge base for material reserves and resources in buildings & infrastructures. [Report]
	Nov 2019	Outlook on the recovery potential of construction and demolition waste. [Roadmap]
WG 2	Oct 2017	Recovery technologies for materials in landfills. [Report]
	Feb 2019	Knowledge base for material reserves and resources in landfills. [Report]
	Nov 2019	Outlook on the recovery potential of waste from landfills. [Roadmap]
WG 3	Oct 2017	Recovery technologies for waste incineration residues. [Report]
	Feb 2019	Knowledge base for material reserves and resources in waste incineration residues. [Report]
	Nov 2019	Outlook on the recovery potential of incineration residues. [Roadmap]
WG 4	Feb 2017	Anthropogenic resource classification system. [Flyer]
	Feb 2019	Classification framework for anthropogenic material reserves and resources. [Report]
	Nov 2019	Outlook on anthropogenic material reserve and resource reporting. [Roadmap]
WG 5		Documentation of dissemination activities [website]

b) Scientific articles

c) Project proposals

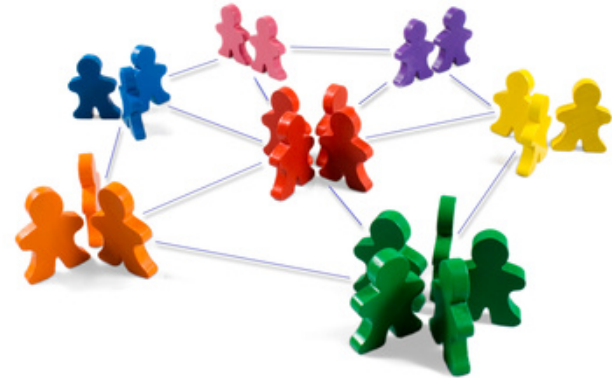


Networking Tools



Benefits of participation in the COST Action:

- ❖ Consolidating existing knowledge.
- ❖ Dissemination to a wider audience.
- ❖ Rapid consortium building in view of project submissions.
- ❖ Empowering young researchers.





Welcome to participate!



MINING the EUROPEAN ANTHROPOSPHERE

www.minea-network.eu

Ulrich Kral
Management Committee Chair

Technische Universität Wien, Austria

E-mail: ulrich.kral@tuwien.ac.at

Dagmar Juchelkova
Management Committee Vice Chair

University of Ostrava, Czech Republic

E-mail: dagmar.juchelkova@vsb.cz



Working Group Leaders: Contact details

WG1: Resource potential of construction & demolition waste

Mohamed Osmani

Loughborough University
m.osmani@lboro.ac.uk

Gang Liu

University of Southern Denmark
gli@kbm.sdu.dk

WG2: Resource potential of waste in landfills and mining residues

M. Teresa Carvalho

C. de Recursos Naturais e Ambiente
teresa.carvalho@tecnico.ulisboa.pt

Joakim Krook

Linköping University
joakim.krook@liu.se

WG3: Resource potential of solid residues from waste incineration

Jakob Lederer

Technische Universität Wien
jakob.lederer@tuwien.ac.at

Michal Šyc

Institute of Chemical Process Fundamentals
syc@icpf.cas.cz

WG4: Classification & reporting of material resources/reserves

Soraya Heuss-Aßbichler

Ludwig-Maximilians-Universität München
heuss@lmu.de

Mark Simoni

Geological Survey of Norway
mark.simoni@ngu.no

WG5: Knowledge Management & Dissemination

Nemanja Stanisavljevic

University of Novi Sad
nemanjastanisavljevic@uns.ac.rs